

Tie-Rods

Thread Bar



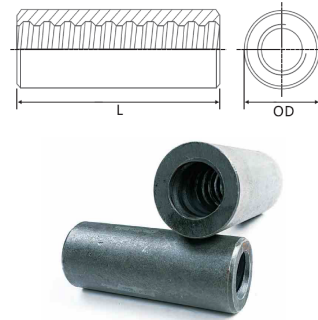
Bar Designation	Diameter	Cross Sectional Area	Weight	Grade 72		Grade 120		Grade 156	
				Pile	Min. Yield Strength	Min. Ultimate Strength	Minimum Yield Stress	Min. Ultimate Strength	Minimum Yield Stress
	in (mm)	in ² /ft (mm ²)	lb/ft (kg/m)	ksi (kN)	ksi (kN)	ksi (kN)	ksi (kN)	ksi (kN)	ksi (kN)
#6	0.79	0.49	1.66	35.3	44.5	58.7	72.6	76.2	86.8
	20.0	314.0	2.47	157	198	261	323	339	386
#8	0.98	0.76	2.76	55.3	69.5	91.7	113.8	119.1	135.8
	25.0	491.0	4.10	246	309	408	506	530	604
#9	1.10	0.95	3.43	69.2	87.2	114.9	144.6	149.5	170.4
	28	616.0	5.10	308	388	511	643	665	758
#10	1.26	1.25	4.47	90.4	114.0	149.9	186.1	195.1	222.3
	32	804.0	6.65	402	507	667	828	868	989
#11	1.42	1.58	5.65	114.4	144.1	190.0	235.8	247.1	281.5
	36	1,018.0	8.41	509	641	845	1,049	1,099	1,252
#14	1.57	1.95	6.95	141.4	178.0	234.5	291.1	305.3	347.6
	40	1,257.0	10.34	629	792	1,043	1,295	1,358	1,546
#14	1.97	3.04	10.94	220.8	278.1	366.2	454.6	476.6	542.7
	50	1,963.0	16.28	982	1,237	1,629	2,022	2,120	2,414
#18	2.50	4.91	17.81	356.1	448.5	591.0	733.3	768.8	875.6
	64	3,167.0	26.50	1,584	1,995	2,629	3,262	3,420	3,895
#20	2.95	6.85	24.80	496.6	625.6	824.4	1,023.1	1,005.1	1,221.6
	75	4,418.0	36.90	2,209	2,783	3,667	4,551	4,471	5,434

ie

Coupler

Diameter	Weight	OD	L
in (mm)	lb (kg)	in (mm)	in (mm)
0.79 20	1.5 0.7	1.5 38	4.3 110
0.98 25	3.0 1.4	2.0 50	5.2 132
1.26 32	5.3 2.4	2.4 60	6.6 168
1.42 36	7.9 3.6	2.8 70	7.9 200
1.57 40	11.4 5.2	3.0 75	8.7 220
1.97 50	21.6 9.8	3.5 90	10.6 270
2.50 63.5	22.5 10.2	4.0 102	10.2 260
2.95 75.0	24.6 11.2	4.3 110	11.0 280

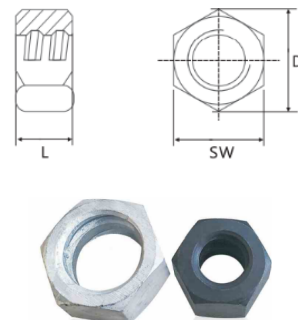
Surface: Zinc, HDG, Epoxy



Lock Nut

Diameter	SW	Weight	L	D
in (mm)	in (mm)	lb (kg)	in (mm)	in (mm)
0.98 25	2.0 50	0.9 0.40	1.4 35	2.3 58
1.26 32	2.4 60	1.5 0.70	1.3 34	2.8 70
1.42 36	2.6 65	1.7 0.75	1.4 36	3.0 75
1.57 40	2.8 70	2.0 0.92	1.8 46	3.1 80
1.97 50	3.1 80	2.79 1.27	2.0 50	3.6 92

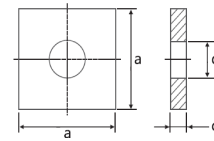
Surface: Zinc, HDG, Epoxy



Anchor Plate



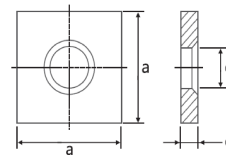
Diameter	Material	Weight	a	c
in (mm)	ksi (MPa)	lb (kg)	in (mm)	in (mm)
0.79 20	33.9 235	4.8 2.2	3.9 100	1.2 30
0.98 25	33.9 235	13.0 5.9	5.9 150	1.4 35
1.26 32	33.9 235	21.1 9.6	7.1 180	1.6 40
1.42 36	33.9 235	29.5 13.4	7.9 200	1.8 45
1.57 40	33.9 235	39.6 18.0	8.7 220	2.0 50
1.97 50	33.9 235	73.9 33.6	9.4 240	2.2 55
2.50 63.5	33.9 235	123.9 56.3	12.8 325	2.8 70



Surface: Zinc, HDG, Epoxy

Spherical Anchor Plate

Diameter	Material	Weight	a	c
in (mm)	ksi (MPa)	lb (kg)	in (mm)	in (mm)
0.79 20	33.9 235	4.8 2.2	3.9 100	1.2 30
0.98 25	33.9 235	13.0 5.9	5.9 150	1.4 35
1.26 32	33.9 235	21.1 9.6	7.1 180	1.6 40
1.42 36	33.9 235	29.5 13.4	7.9 200	1.8 45
1.57 40	33.9 235	39.6 18.0	8.7 220	2.0 50
1.97 50	33.9 235	73.9 33.6	9.4 240	2.2 55
2.50 63.5	33.9 235	123.9 56.3	12.8 325	2.8 70

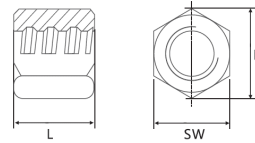


Surface: Zinc, HDG, Epoxy

Flat Hex Nut

Diameter	Material	Weight	SW	L
in (mm)	ksi (MPa)	lb (kg)	in (mm)	in (mm)
0.79 20	33.9 235	0.37 0.17	1.3 32	10.1 45
0.79 20	33.9 235	0.79 0.36	15.8 402	13.5 60
0.98 25	33.9 235	1.54 0.70	20.0 509	13.5 60
1.10 28	33.9 235	1.54 0.70	2.0 50	13.5 60
1.26 32	33.9 235	3.08 1.40	2.6 65	16.2 72
1.42 36	33.9 235	3.19 1.45	2.6 65	18.0 80
1.57 40	33.9 235	4.66 2.12	2.8 70	22.5 100
1.97 50	33.9 235	6.82 3.10	3.1 80	24.7 110
2.50 63.5	33.9 235	10.38 4.72	3.9 100	25.9 115
2.95 75.0	33.9 235	19.45 8.84	4.5 115	36.0 160

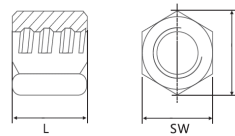
Surface: Zinc, HDG, Epoxy



Spherical Hex Nut

Diameter	D	Weight	SW	L
in (mm)	in (mm)	lb (kg)	in (mm)	in (mm)
0.98 25	2.2 55	1.54 0.70	2.0 50	2.4 60
1.10 28	2.2 55	1.54 0.70	2.0 50	2.4 60
1.26 32	3.0 75	3.08 1.40	2.6 65	2.8 72
1.42 36	3.0 75	3.19 1.45	2.6 65	3.1 80
1.57 40	3.2 81	4.66 2.12	2.8 70	3.9 100
1.97 50	3.6 92	6.82 3.10	3.1 80	4.3 110
2.50 63.5	5.1 130	10.38 4.72	3.9 100	4.5 115
2.95 75.0	5.2 132	19.45 8.84	4.5 115	6.3 160

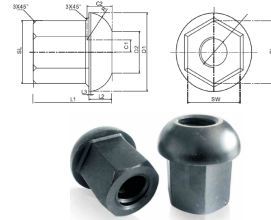
Surface: Zinc, HDG, Epoxy



Domed Nut

(Heavy Duty)

Diameter	Dimensions				Weight
	SW	D1	L1	L2	
in (mm)	in (mm)	in (mm)	in (mm)	in (mm)	lb (kg)
0.98 25	2.0 50	2.8 72.0	3.0 75	0.9 22	2.5 1.1
1.26 32	8.7 60	176.0 80.0	3.5 90	1.1 28	3.9 1.8
1.42 36	9.4 65	198.0 90.0	3.9 100	1.2 30	5.1 2.3
1.57 40	10.1 70	220.0 100.0	4.5 115	1.3 32	6.8 3.1
1.97 50	12.3 85	264.0 120.0	5.7 145	1.4 36	11.8 5.4

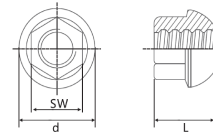


Surface: Zinc, HDG, Epoxy

Domed Nut

(Light Duty)

Diameter	Dimensions			Weight
	SW	L	D	
in (mm)	in (mm)	in (mm)	in (mm)	lb (kg)
0.79 20	1.4 36.0	1.6 41	1.9 49	0.7 0.3
0.98 25	1.6 41.0	1.8 45	2.2 55	0.8 0.4
1.10 28	1.6 41.0	2.1 54	2.4 62	0.9 0.4
1.26 32	2.0 50.0	2.4 60	2.6 65	1.5 0.7
1.57 40	2.4 60.0	2.8 70	3.5 88	2.9 1.3

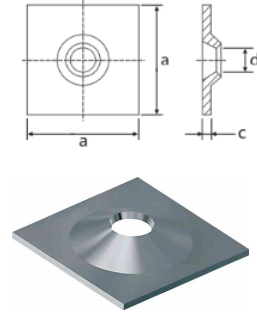


Surface: Zinc, HDG, Epoxy

Domed Plate



Diameter	Material	Weight	a	c
in (mm)	ksi (MPa)	lb (kg)	in (mm)	in (mm)
0.79 20	38.0 235	1.7 0.8	3.9 100	0.4 10
0.98 25	38.0 235	4.4 2.0	5.9 150	0.5 12
1.26 32	38.0 235	7.7 3.5	7.1 180	0.6 15



Surface: Zinc, HDG, Epoxy

Spacer/Centralizer

